

Power Boxes on Fire in Dunolly

Story by Vicki Frizzell and photos by Nerissa Caldecoat

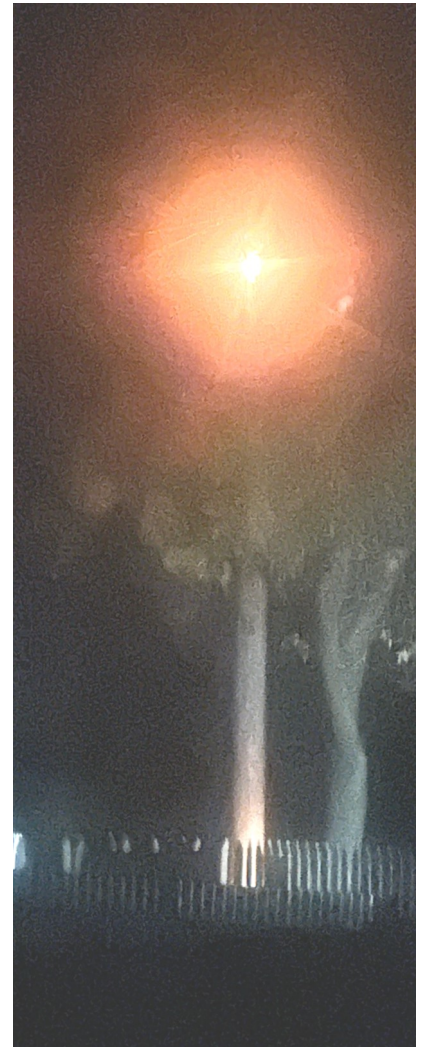


It was just after midnight on Friday morning when a very loud crash disturbed the quiet just as I was settling to sleep. Even then I did not get up to investigate until the agitated voices across the street and the fire siren sounded. At first I could not see what all the commotion was about. Then I noticed the halo of light shining through the tree did not look like the usual street light I see from my window; more disturbing was the very attractive molten rain falling from it.

Nerissa, whose property was affected by all this, said the power boxes connecting her place and her neighbour's to the electricity pole had both caught fire. They were all very fearful about the tree catching fire and the real risk to their cars and houses. Fortunately none of that happened. The fire brigade arrived with their lights on and established that by then the fire was almost out. Because live wires could be involved they quickly assessed the situation and contacted Fire Comm in Ballarat requesting assistance from Powercor. Through Fire Comm brigades can request assistance from the police, gas, electricity and more fire appliances if needed.

A Powercor maintenance crew arrived promptly. They worked on the burnt power boxes and then on the transformer in Orme Street. Their spotlights are very powerful and certainly filled my bedroom with plenty of light.

Continued on Page 15



The Welcome Record Inc.

A0013872F ABN 19299170473

Published by community volunteers
at the Dunolly Town Hall
83 Broadway Dunolly Victoria 3472

Phone: (03) 5468 1054

Email: welcomerecords@inet.net.au

Web: www.dunollynews.org



Editors:

Susan Anderson - Editor (President)
Sharron Fitzgerald - Co-editor
Marilyn Goldie Co-editor

Office:

Monika Thumerer - Office Manager (Treasurer)
Marilyn Goldie (Secretary) Assistant to Office Manager

Proofreaders:

Jan Brock (Vice President)
Esmé Flett
Cynthia Lindsay
Rosemary Mecredy
Jenny Scott

Printing and Distribution:

Monika Thumerer
Marilyn and Bob Rowe



OPENING TIMES

Tuesday 9.30am - 3.30pm

(for advertisements, articles and classifieds)

Wednesday 9.30am - 3.30pm

(to receive payments)

Phone 5468 1054

Contributions are accepted up to **3pm on Tuesdays**.

Exceptions are made only by prior arrangement, or for important community notices for the *Classified* pages. If in doubt, please ring us before 3pm on Tuesday to avoid disappointment.

All letters, articles and classifieds must contain the author's full name, home address and daytime telephone number, not necessarily for publication if so requested. However, during election campaigns, all communications pertaining to candidates must have authors name and suburb published in accordance with electoral regulations. All un-acknowledged photo/pictures are from stock.

The Welcome Record aims to present the diversity of viewpoints which reflect the concerns and interests of our community. It will not print contributions which are defamatory or being used as an alternative to a personal approach in dealing with a personal issue. The opinions expressed by contributors are not necessarily those of *The Welcome Record*.

INDEX

Title	Page
Rosie's Ramble	2
Letters to Editor	3
Cooking Corner	5
CGSC News	7
Stories from Cynthia	8
Subscription Reminder	8
Church Page	9
Dunolly Bowling Club History	11
Poetry	13
School News	14
ScamWatch	15
Loddon Mayoral Column	16
Crossword Page	17
Classifieds and Notices	18
Sports	19



It is good to see some common sense prevailed somewhere and some of the most annoying (for country people) restrictions have been lifted. City folk are still not allowed to run away to the country though.

Not a lot of anything happened in North Dunolly this week — no dramas or adventures.

I see as soon as Dave, the railway man, hit the Front Page of *The Welcome Record*, he is gone. Rather miss his lone figure sitting by the tracks. Good luck to him in the Hand-signaller of the Year contest.

I could hardly believe my eyes when I read the advert for meatless goods in the paper. Bad enough there were such brain deceiving things as meatless sausages, but meatless meatballs! I reckon that is a step too far.

Was going to go in to Maryborough to shop one day last week, but didn't make it. When I wrote out my short shopping list, I realised that I could buy all the goods I really needed in Dunolly without breaking the five kilometre travel limit. Rosie

The hair-do fairy

(We have all had dealings with these)



A predominantly nocturnal fairy, the Hair-do Fairy busily styles your hair as you sleep.

Their work is remarkably adventurous and original, as a quick glance in the mirror first thing in the morning will testify.

This fairy can also be known as the Make-over Fairy since, if time permits, it might also do some compelling overnight work on your eyes and complexion

Tobhy Riddle

Who is Tobhy Riddle?

Tobhy Riddle is an Australian artist and writer/illustrator of picture books and illustrated books which have been published in many countries, and translated into many languages, around the world. His work has been translated by Haruki Murakami and he has been nominated for the 2022 Hans Christian Andersen Medal.

For more information go to <https://www.facebook.com/TobhyRiddle/>
Information from *Wikipedia*.

Defibrillators available at —

SES, CFA, DFNC, Dunolly Bowls Club, Doctor's Office and Dunolly Town Hall.

In case of emergency, the defibrillators can be accessed at the above venues when they are open. The unit at the Town Hall is located in the breezeway outside and can be accessed at any time.

Important telephone numbers

Police: 000

Fire: 000

Ambulance: 000

Police non emergency: 131 444

Dunolly Police: 5468 1100

Dunolly Doctor: 5468 1104

Dunolly SES: 5468 1199

 **LETTERS TO EDITOR**

Dear Editor

I would like to bring it to people's notice of a small colony of koalas which, over the last couple of years, have taken up residence in a small State Government park on the Burnt Creek frontage at Bromley, just off Middle Road.

Many of the new residents enjoy walking the area, with their children and dogs.

It has come to my notice in the past few months of spotlight shooting activities in the district. Now the koalas have gone.

I would like to see some interest as to finding out where the animals have gone.

Fred Davies

Dear Editor,

Regarding: Tourism Signage *Red Dog The Movie*
 After watching a documentary earlier this year on *The Making of Red Dog* the feature film, I thought why isn't there a tourism sign in our town highlighting that Koko the star of *Red Dog* was born right here in Dunolly? There have been two movies *Red Dog*; *Red Dog: True Blue*; also the documentary.

All three releases have received worldwide acclaim, but sadly no permanent signage to acknowledge Dunolly's contribution to these iconic Australian cinema releases.

I have spoken to Carol and Len Hobday, of Dunolly — the breeders of Koko, and they support my endeavour to have a sign erected.

As many of you may already know Carol and Len have always mentioned Dunolly and its appeal to visitors when they have been interviewed.

In light of this, I have made enquiries to the Central Goldfields Shire Tourism and Events personnel and they have been incredibly supportive of this idea. After speaking to members of the community, it seems the appropriate placement of this sign would be next to the Community Services Board on the Broadway entrance to Dunolly township.

I have made enquiries with the council regarding permits etc. I will shortly be seeking funding through a Community Grant to make this sign a reality. The early draft of the wording of this sign is:

Welcome to Dunolly
 Birthplace of Koko
 Star of the Movie *Red Dog*

A picture of Koko will be included.

I would like to update the Dunolly community through *The Welcome Record* (Letters to the Editor) on the progress of this project. It may take a while, but I feel it's a worthwhile tourism badge for Dunolly.

We are known for our treasured Gold and Grain in our district and maybe now our contribution to Australian cinema too!

Warm regards,
 Maria Spano

Dear Editor

This is a warning notice for whomever came to my property and sat on my horse, declaring "all I need is a bridle".

This horse belongs to an eight-year-old and is not there for you or anyone else.

Please note: this is a first and only warning.

Regards
 Jakki
 Details supplied

Cynthia's magical can opener



Non-magical non-electrical version.
 Super useful when working

After a few disasters with faulty can openers I found a magic, super duper can opener which operates on its own, just like a robot. Then the other day the ring-pull on a can of tomatoes went limp and refused to open the tin, so I put my magic opener to work. It whizzed around the top of the tin and when I removed it, the lid of the tin refused to budge and was stuck tight on the wheel. After supreme efforts of tugging and manoeuvring the lid, I gave up and went to my neighbours for help. Barry tried hard, checked batteries, to no avail, so had to give up in case of breaking my now-not-so-super opener. So, next step, off to garage next door to enlist Brad's help. Even he was stumped until he asked me how the opener turned on and I explained that you had to put it on to the tin to engage the wheel and then it just took off. Brad then realised that it was magnetic so touched it with his screwdriver and away it went and lid was removed. As a result Brad complimented my scientific expertise just as though I had been the one to fix my magic can opener.

Cynthia

**DUNOLLY AND
 MARYBOROUGH
 DISTRICTS FUNERAL
 SERVICE**

**Specialising in
 pre-paid and
 pre-arranged
 funerals with
 special
 Pensioner
 concessions**



5461 1979

If no answer call:
 John: 0418 995 424
 Jono: 0437 099 624



 **Professionals**
Maryborough

Your Local Real Estate Agent

Where our whole team works for you

- Licensed Estate Agents • Property Sales
- Property Management • Business Sales
- Auctioneers

95 High Street, Maryborough • Ph: 5461-1166
• buckgow@bigpond.net.au
www.professionalsmaryborough.com.au

Dunolly Community Market



"Giving Back"

Come along and join in the fun

With the current COVID-19 restrictions of only 10 persons at a public gathering and acting upon advice from the DHHS we must regretfully cancel the June Market.

The Market Committee will be holding a meeting to discuss the July and August markets and the viability of future markets in this current environment.

Please accept our sincere apologies if this has caused any inconvenience to you or our community.

Peter McFadden



DUNOLLY COMMUNITY MARKET
~~CANCELLED~~
SUNDAY 13th JUNE
From 8am until 1pm

Come and join in the fun with lots of Stalls & Shops open for you to enjoy the shopping experience. The RSL will be hosting the Market BBQ.

If you would like a stall, bookings are essential, contact us either on Facebook or Phone **0460705311**

Dunolly Community Market

"GIVING BACK"



Divine Dining Dishes



Baked sticky chicken

Who can resist oven-baked sticky chicken? It's so easy and versatile, as the combination of a few staple pantry ingredients come together to produce a delicious, finger-licking dish that will have everyone coming back for seconds.

Ingredients:

1kg (2.2lb) chicken pieces
(breasts, thighs or drumsticks, bone in)
5 tbsp tomato sauce
3 tbsp Worcestershire sauce
2 tbsp wholegrain mustard
2 tbsp runny honey
2 tsp crushed garlic

Method:

Place the chicken evenly in a greased ovenproof dish. Mix the remaining ingredients in a bowl, then pour over the chicken.

Cover and leave to marinate in the fridge for at least half an hour.

When ready to cook, preheat oven to 180°C (350°F) and bake for 40-45 minutes or until the chicken juices run clear.

Cover with tin foil if the marinade starts to burn during cooking.

Serves: 4 Prep Time: 5 minutes,
plus marinating time (30+ minutes)

Cooking Time: 40-45 minutes,
plus oven preheating time



Crustless lemon tart

This tart is the perfect entertaining recipe, as it can be made ahead of time and can be served warm or cold. It's so easy to mix in one bowl, with no fiddly pastry to contend with. Delicious with whipped cream, ice cream or crème fraiche.

Ingredients:

3 eggs
½ cup flour
1 cup white sugar
100g (3.5oz) butter, melted
1 tbsp lemon zest
½ cup lemon juice
1 cup cream
½ tsp vanilla extract icing sugar to serve

Method:

Preheat oven to 180°C (350°F) and grease and line the bottom of a 20 cm (8 inch) round spring-form cake pan.

Place the eggs in a bowl and whisk lightly, then whisk in the flour until well combined.

Add the remaining ingredients and whisk until well combined.

Pour the mixture into the prepared pan and bake for 35-40 minutes until the edges are lightly browned. The centre will still be a little wobbly.

Leave in the pan to cool slightly before removing.

Dust with icing sugar to serve.

Serves: 6 Prep Time: 10 minutes

Cooking Time: 35-40 minutes

**CENTRAL GOLDFIELDS
RATEPAYERS AND
RESIDENTS ASSOC. INC.**

With Covid back on the agenda, we understand there is a lot of frustration and angst.

However, there is not a lot we can do but just make sure, whether you agree with it or not, we all do our part and make sure we cross every "t" and dot every "i". Please stay safe and look after yourself, family and others. Another issue very alive at the moment, is we all could make more of an attempt to rectify our waste and recycle situation.

I do believe we all know what we should be doing, and by doing that we would not have as large an issue. So please it's not a lot to ask — a bit more of an attempt and the recycle concern will become more manageable. The winner will be our wallet, our kids, our community and the environment. With a more focused individual and community effort, we all will reap the rewards. On another twist — picture this:

A submitted building application with all the appropriate recommendations, reports and conditions completed. After completion, an application for addition to the previous application lodged.

Approved with recommendation, reports and avenues for an addition only is approved and built. The original building application with recommendations and reports and conditions disappears.



Personalised Natural Medicine



23 years in practice
Nurse - Naturopath - Bowen

- # Food - Lifestyle - Supplements
- # Vitality - Wellness - Energy
- # Hormones - Weight - Immunity
- # Simple easy steps
- # Health coaching support
- # Be a better YOU...

Love your life again!

Naturopathic Wellness Clinic | 0408 191 738
Tarnagulla / online consults www.jeanetteshipston.com

Carpet Cleaning by Harold

Old fashioned values - modern technology

Ph: 0412 845 715



New management, planning staff and change in shire staff and still no original application in sight. Other new additions which contravene the original EPA and council conditions are submitted. But that doesn't matter because they don't know the original plans exist or can't find them. Does this sound right?

Those conditions and regulations are put in place to protect the community. This we believe is not an uncommon event across our country, with more community involvement these issues will be reduced. We have several councillors who were in office when the original applications were submitted in 2010, 2014, 2015 and 2016. Four different projects with possibly missing original plans. These councillors possibly are the only council representatives who are aware of the original plans, yet not a word.

Of the four applications in question, three are under investigation and one is being monitored. Is this the professionalism and management we would expect from our representatives or our elected representatives?

Maintaining records and an adequate file system is crucial.

On the same note — FOIs on one of these particular applications. We have asked for the original planning application of one development. CGR&RAI (on two occasions) has been supplied copies of the amendment which covers the addition only, plus a satellite image and council has stated the amendment supplied is the original plan. It is not the original plan it is an amendment.

Possibly not the fault of the officer attending to our concerns. However when a file is provided and it clearly states "Amendment" on that planning application, why is it provided as an original? One would possibly question the professionalism.

The way around this is we all work with the council and councillors and assist them to understand our real situation. The allowance for our councillors is not large — we also have an obligation to assist them. Working together as a community is interaction both ways. All we ask is transparency, accountability and public consultation. Do what you are required to do.

Stay safe and hopefully next week we can say goodbye to this Covid situation once again.

Thank you
Wayne McKail
President

Love's Septic Tank Cleaning Service



For all your septic cleaning needs trust the family with over 30 years experience.

Servicing Dunolly and surrounding areas.

For prompt service

at extremely reasonable rates call:

Mark 0428 179 870

or leave a message on **5468 1212**



State Government update

The Victorian Government has announced changes to Victoria's restrictions for metropolitan Melbourne and regional Victoria which started from 11.59pm Thursday 3rd June.

Restrictions for metropolitan Melbourne

The current restrictions will remain in place in Melbourne for a further seven days, with some small changes. From 11:59pm 3rd June 2021:

There will still be only five reasons to leave home:

- Shopping for food and supplies
- Authorised work and study
- Care and caregiving
- Exercise
- Getting vaccinated.

A number of outdoor jobs will be added to the authorised list — like landscaping, painting, installing solar panels, or letterboxing.

Other restrictions, including mask wearing, will stay the same.

People will be able to travel further for exercise and shopping, with an expanded 10km radius.

People from Melbourne will not be able to travel to regional Victoria, including over the Queen's Birthday long weekend.

Restrictions for regional Victoria

Regional restrictions began easing from 11:59pm 3rd June.

- Travel restrictions and the five reasons to leave home will be lifted.
- Restaurants and cafés can reopen to a maximum of 50.
- Retail, beauty and personal care, entertainment venues and community facilities will also open in line with density limits.
- Businesses which are open in regional Victoria must check the IDs of everyone they serve.
- Religious ceremonies and funerals will be capped at 50, weddings at 10.
- If you can work from home, you should continue to work from home. Capacity limits in workplaces such as offices capped at 50 per cent or 20 people, whichever is greater.
- Masks must still be worn inside.
- Regional Victorians will be able to travel in regional Victoria. Melburnians will not.
- Public gatherings will increase to 10 people.
- Visitors to the home will not be allowed.

QR codes — new requirements

QR code record-keeping requirements will now be mandatory in retail settings, like supermarkets and shops. Retailers must use the Service Victoria QR Code Service. The 15-minute threshold will also be removed so anyone entering a shop or a café will need to check-in, regardless of how long they visit the premises.

Support for businesses

Building on the \$250.7 million Circuit Breaker Business Support Package announced Sunday 30th May, a new allocation of up to \$209.3 million will flow to small and medium-sized businesses, including sole traders, increasing the total support package to \$460 million.

The Business Costs Assistance Program grants for eligible businesses located in metropolitan Melbourne will be doubled from \$2500 to \$5000.

- Regional businesses unable to open due to the ongoing restrictions, such as nightclubs and amusement parks, will also be eligible for the extended payment.

- Metropolitan businesses that which have restrictions eased from Friday will not be eligible for the extended payment.

Applications for the Business Costs Assistance Program are open from Thursday 3rd June and will remain open until 11.59pm on Thursday 24th June 2021.

The Licensed Hospitality Venue Fund grants for businesses in metropolitan Melbourne with eligible liquor licences and food certificates will be doubled from \$3500 to \$7000.

Eligible liquor licensees under the Licensed Hospitality Venue Fund payment will be emailed directly by Business Victoria from Thursday 3rd June 2021, with a link to their grant application form.

For more information on how to apply, visit Business Victoria at:

<https://business.vic.gov.au/grants-and-programs/circuit-breaker-business-support-package>

or call the Business Victoria hotline on 132 215.

(These restrictions may change on Friday 11th)

Maintaining your wood heater this winter

Central Goldfields Shire Council is reminding all households using an open fireplace or wood heater to ensure care is taken to prevent producing excessive amounts of smoke, which can have a negative impact on your neighbours and the environment.

Tips to avoid excessive smoke emissions include:

- Have your heater professionally checked and cleaned prior to using it eg. before autumn begins. Ensure all built-up creosote is removed
- Always burn small logs of aged, dry hardwood
- Store firewood under cover in a dry ventilated area; freshly cut wood needs to be stored for eight to 12 months.
- When lighting a cold heater use plenty of dry kindling to establish a good fire quickly.
- Stack wood loosely in the firebox so air can circulate — don't cram the firebox full.
- Turn off the warm air circulation fan when lighting up and when refuelling.
- Keep the flame lively and bright; your fire should only smoke for a few minutes when you first light it and when you add extra fuel. Open the air controls fully for five minutes before and 15 to 20 minutes after reloading.
- Don't let your heater smoulder overnight — keep enough air in the fire to maintain a flame.
- Check your chimney regularly — if there is smoke coming from the chimney, increase the air supply to your fire.
- Understand how to operate your wood heater or open fireplace correctly. For tips on efficient lighting and burning of firewood, go to EPA Victoria's website.
- Once you have started your fire, go outside occasionally and check the chimney for smoke — if there is excessive smoke, then something is wrong with your heater/fireplace or the way in which you are using it.

Central Goldfields Shire Council General Manager Community Wellbeing Martin Collins said with the weather now getting cooler, it is now time for residents with a wood heater to check their chimney.

The Central Goldfields Shire Compliance and Environmental Health Team are available on 5461 0624 or 0429 016 365 if you have any concerns about the use of chimneys within the Shire.

For more information on how to maintain wood heaters, visit www.centralgoldfields.vic.gov.au/woodheaters

Smiling plastic bunny



Lost, alone in this golden haze
 What happened to my green filled days?
 Listen, listen as I loudly call
 Find me quickly, so I do not fall.

Photo by Hans Eiskonen

<https://unsplash.com/photos/13sk8LUVwMg>

The Welcome Record

Subscriptions 2021 to 2022

Payment of subscriptions for the coming year
 are due by 30th June 2021

RMB serviced by Dunolly Post Office \$25.00
 (costs donated)

Posted \$140.00

Your subscription can be paid:

In person at *The Welcome Record* office on Tuesday
 or Wednesday, or drop into our letterbox at anytime.

By post to *The Welcome Record*, Town Hall at 83
 Broadway, Dunolly 3472, with this form accompanying
 your payment.

By direct debit to BSB 633-000 Account Number:
 116310574. If paying by direct debit, please fill out the
 form below to let us know your payment has been
 deposited, or email a confirmation to:

welcomerecords@iinet.net.au

***The Welcome Record* Subscription 2021 to 2022**

Name: _____

Address: _____

Phone: _____

Please circle the relevant subscription

RMB serviced by Dunolly Post Office \$25.00

Posted \$140.00

Form of payment — please circle

Cash Cheque Direct Debit



Stories from Cynthia

Did someone ever give you a surprise party? And were you surprised or shocked or maybe horrified? Then again, maybe you were thrilled to bits.

From my experience surprise parties do not always turn out as planned. I particularly remember one, years ago, which happened to a close friend of mine.

Her name was Judy and she had a male colleague who worked closely with her in her chosen career, and apparently had become smitten with Judy, unknown to her. With her birthday looming this friend decided to throw her a surprise party at her place.

When we friends heard about it we were all convinced it was a bad idea and tried to persuade Judy's well wisher against the party. We told him it was not her scene rather than explain that she did not see him in the same light as he believed. Nothing would deter him and he went ahead with great plans, re-organising and decorating Judy's house and swearing everyone to secrecy. Judy's job had taken her away for a few days so the coast was clear. We were told to hide our cars in the adjoining paddock and of course hide in the dark in the house.

A tired Judy arrived home, opened the back door to be greeted with lights turned on, people everywhere, balloons floating about, and she reacted in shock and horror. "What have you done with all my furniture?," she shouted, not at all happy.

That was certainly an anti-climax. Of course she calmed down eventually and made the best of her unwanted party. So it seems that surprises are not always good ones

The funniest surprise party I ever attended was at a teacher friend's house and we all went through the same procedure except this time we had to pop balloons when the guest arrived. When we heard the car we all stood ready and as the door opened off went all the balloons and everyone shouted "Happy Birthday" but it turned out to be the delivery man with some of the party food. He was certainly surprised and we were all left with dead balloons.

Please do not let me put you off giving a surprise party because of these minor disasters.

Cynthia

Louise Staley MP
 MEMBER FOR RIPON

For help with any State Government matters, my office is here to help you.

177 High St, Maryborough 3465
LouiseStaley.com.au

Authorised by Louise Staley MP, 177 High Street, Maryborough. Funded from Parliamentary budget.



Catholic Church

Mass and Assembly are back where they should be. We had a small Assembly last Sunday, and there will be Mass at St. Mary's Dunolly on Sunday 13th June at 8.30am. We have to wear masks, physical distance and sign in at the church. Our best wishes go to Janine, hope to see her fit and well again soon.

R Mecredy

*I am the living bread from heaven, says the Lord;
Whoever eats this bread will live forever.*
John 6:51-52

St John's Anglican Church

Rev Canon Heather Blackman
Parish Office, 6 Nightingale Street,
Maryborough. Phone 5460 5964

Services are held every fourth Thursday at 10am.
The next Service will be on Thursday, 24th June,
COVID-19 restrictions permitting.

Esmé Flett

*"Here are my mother and my brothers!
Whoever does the will of God is my brother
and my sister and my mother."*
Mark 3.34-35



Aches and Pains

I am not a hypochondriac! But, have you noticed that there is never a time when your body is completely free of pain or discomfort? Your big toe is hurting because your new shoes are a little tight and they have given you a blister; you feel a bit queasy because you over indulged with dessert; you have a bit of a headache and feel slightly dizzy because you bent over to pick something up off the floor. You're a bit out of breath because you climbed a couple of stairs or made your way up a slight incline. Your arthritic finger hurts like billyo. But, it's going to rain today, so tomorrow the pain in your finger is completely forgotten because your knees hurt so much you have to hobble around with a stick! And so it goes on and on. So, I am not a hypochondriac? But having said that, if we are ever having a conversation in the street and all you get from me after you've asked "how are you" is nothing but my aches and pains or how my mother's great uncle's sisters husband spent time in hospital with a mysterious stomach ailment, please feel free to interrupt me, or better still, just walk away. I'll probably "shout" the rest of my story at you as you're doing so, but that is the price you pay for asking how I am. Take care of yourselves.

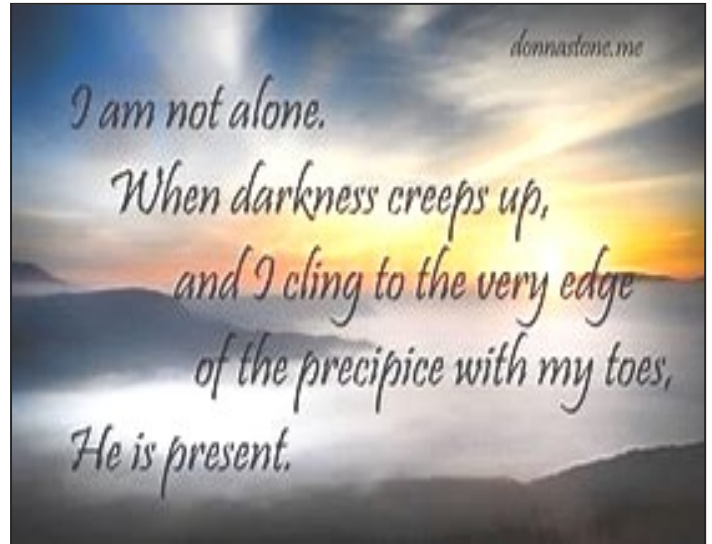
Sharon Hiley

Uniting Church

Worship on Sunday 13th June at 9.30am will be led by Heiner Bauch.
The Op Shop will reopen this week as usual.
The Church and the Op Shop now have a QR code.
Linda Pickering



The Op Shop is open on Tuesdays from 9.30am to 2pm
Thursdays and Fridays from 10am to 4pm



Community Bank - Maldon & District

Supporting your community

When you bank with the Community Bank, profits pour back into the Dunolly community. So far we've invested over \$3 million into our communities.

A bank giving back sounds fantastic, but for us that means business as usual.

Feel good about who you bank with.

Call 5468 1596 or drop in to 109 Broadway
www.mdcb.com.au





**Your Local
ELGAS
DEALER**



Phone/Text 24/7

0418 571 702

DUNOLLY RURAL TRANSACTION CENTRE

Centrelink
Medicare
Banking
Photo Copying
Printing
Laminating
Computer Training
V/Line Bookings
Community Bus Friday Run
Dry Cleaning





Information Centre
Maps
Post Cards
Tourist Brochures

Trading hours:
Monday to Friday
10am to 4.30pm
03 5468 1205

rtodundly@gmail.com



Family owned and operated for over a decade.

www.pyreneestrees.com.au

**TREE MAINTENANCE
PRUNING, REMOVAL
STUMP GRINDING, MULCHING
WOOD MILLING
LIMITED ACCESS TOWERS**
(tower fits through 76cm wide doorway)

For Sale • Mulch • Sleepers • Posts

Call for
a free
Quote **0409 517 064**

Fully insured and qualified



KITCHENS LAUNDRIES VANITIES

20 Years Experience
Free Measure and Quote
Attention to detail
Personalised Service

EVERY BUDGET CATERED FOR

Peter and Shelley Davies
18 Drive In Court Maryborough 3465
www.evolutionkitchens.com.au
Telephone **5461 1000**

IAN GAIN ELECTRICAL

REC NO: 13585
1 Short Street, Carisbrook 3464
Phone/Fax: 5464 1402 Mobile: 0418 388 226



Email: ices@westnet.com.au

- Domestic
- Commercial
- Industrial
- Farming

*Emergency Callout Service
Upon Request*

ROD STRATFORD PLUMBING

DUNOLLY AND DISTRICT

- All types of plumbing and gas fitting
- New homes
- Maintenance and repairs
- Renovations
- Roofing

No Job Too Small

Over 30 years experience

Phone: 5468 1618
Mobile: 0428 329 300

Dunolly Bowling Club History Part 3

1951 — After the Electricity was installed at the clubrooms, which cost £125. If the lights had to be used when games ran overtime into the evening each player had to pay one shilling.

1953 — Over the years extensions were added to the club which is a testament to the volunteers at those working bees, while the new additions were being done, the old section was lined at a cost of £75. A cupboard including a crockery cupboard was built in the kitchen and now the club had a urn, which sat proudly on the wooden shelf. A porcelain sink was installed at the cost of £5. A 1000 gallon water tank was purchased.

1954 — In April at a cost of £398 with the approval of the General Committee a new kitchen was installed. In October the ladies purchased furniture for the club, three chrome and laminex tables and 24 chairs to match. As the water pressure was weak, another water tank was purchased which held 3000 gallons, now they had pressure to also spray the greens.

Still no inside toilets in the clubroom.

Mr Dave Wood who donated £10 towards locker boxes, years before opened the bowling season on 2nd October 1954, the State President of Bowls Mr Fred Yotts and Vice President Em Wyber attended the Dunolly club with the intention of getting Dunolly to play Pennant.

Mrs. Renshaw, the Associate first President, passed away on 11th October 1954, leaving a large hole in the position of President's Chair.

1955 — The telephone was installed at the club in January. A fundraiser was held on Caulfield Cup day, to raise money for a new 24inch electric mower and a good watering system; the club approached the council regarding tapping from the main and having pipes installed that were as large as possible; this was granted.

Three teams entered into the Midland Pennant competition and performed well. The fee for the club was set at £2/10 shillings for members, ladies fees were £1/1 shilling.

A number of other items took precedence in 1955; the club purchased a mower and rotary sprinkler, discussions were held to join the Midlands Sub District Bowls and the club approached the council requesting more land for an extension of the bowling green and it was granted the patch of land which had been filled with waste from the building of the Dunolly Swimming Pool. This area was not used until some 30 years later when the "B" Green was formed.



Bowlers Mr Col Rodgers from MHS standing, on the mat is Mr Alf Freemantle from Dunolly, playing in the Champion Of Champions Mr Freemantle's cheer squad R-L are Ian Flett, Frank Herman and Alan Gordon. Mr Col Rodgers was the winner. In 1975-76 Mr Alf Freemantle won the Champion of Champions.

1956 — Discussions were held regarding the erection of shelter or shade for the entrance side of the green, a veranda was built in the front of the clubhouse, the club approached the council regarding the state of the front fence, the club was to pay £20 per annum towards the cost of the fence. Funds were allowed for the erection of new shelters with halved seats. It was a very expensive year for the club.

1957 — The new shelters were built by the end of the year. It was decided not to contribute to the further upkeep of the Gordon Gardens.

1958 — Permission was asked of the Shire of Bet Bet to obtain 16cubic yards of sand from Carmanuel Creek for the purpose of top dressing the bowling green, with the understanding that every care was to be taken to ensure no damage would be done by the removal of the sand. In June suggestions for improvements to the clubhouse were also discussed — a small office for the use of the secretary, a change room with a wash basin to be included, the shed to be repaired, the entrance to be beautified, additional shelters and seating were also installed around the ground. Long range plans were also made for an extension and addition to the clubhouse for 10 feet to the east end for the provision for toilets at a cost of £600.

1958 — Ladies Committee were: Florrie Deason, Audrey Grace, Dos Polineli, Mrs. Merton, Mrs. Ogle, H. Thomas, Mrs. Shepherdson, Ella Humphrey, Flo Britten, Clarrie Cole, Mrs. Ina Watts, Cal Raven, Sybil Sellers and Gwen Watts.

1959 — A meeting held on 30th April for discussion for the formation of a District Association, voting 17 for and three against. Only one Pennant team was entered for the 1958/59 season: they won the first of what was to become 13 flags by 1985. The club approached the council to play bowls on two Sundays; the first applicant was rejected, after a personal approach by the President and Secretary this was granted. The club was allowed to play on Sundays. Gradually more Sundays were granted until an application was no longer necessary.

1960 — the club was running tournaments on the Australian Day weekend, which was very popular.

Mr. Dennis loaned me a book *A History of the Dunolly Bowling Club*. After reading it I was able to continue my journey with the club's history.

Hannah Delconte



Mr Maurice Peart proudly receiving the Pennant flag 1959.



**MALCOLM'S
PAINTING & DECORATING**
0400 681 207

TRADE QUALIFIED

- COMMERCIAL
- DOMESTIC
- INDUSTRIAL

e:malcs01@hotmail.com

 Malcolm's Painting & Decorating

MBL

Moliagul Build & Landscape Pty Ltd

onsite welding – retaining walls – paving – concreting – roof sheeting
solid plastering – owner builder assist – repairs & maintenance
or freshen up that garden or create a new outdoor entertaining space

For an obligation free quote call or email Keith

T 0418 953 473 - E moliagulbl@gmail.com



Cassia Plumbing


- ◆ New Homes & Renovations
- ◆ General Plumbing & Blocked Drains
- ◆ Water Tank Manufacturer & Installations
- ◆ Leaking Taps, Spouting Downpipes
- ◆ Gas Fitting, Wood Heaters, Roofing
- ◆ Hot Water & Solar Installations

No job too small.
Prompt friendly and professional service.

Paul Hounslow
0417 103 441

Reg 25573

SLUDGEBOOSTERS P/L



Septic tank cleaning
Grease traps
EPA LICENCE
5461 2975
mobile 0417 598 614
Greg Butler

**AT BETTER THAN REASONABLE
RATES**



Now available from Broadway

Ph: 0429 129 038

Come on down and grab a hot sizzling sausage — different varieties with various delicious toppings. Also egg and bacon rolls; hot chips and hot and cold drinks.



**EDDINGTON
ENGINEERING**

**ESTABLISHED
AND LOCATED
IN EDDINGTON
FOR OVER
40 YEARS**

**SPECIALISING IN UTE AND
TRUCK TRAYS AND ALL
ENGINEERING REQUIREMENTS**

PHONE: 035468 7210
MOBILE: 0427 388 654

EMAIL: info@eddingtonengineering.com.au
ONLINE: www.eddingtonengineering.com.au

Poetry

In times like this

They, them — call it “cancel culture”
 But what else can we do?
 This COVID virus holds us all to ransom
 On so many fronts, it is a terror, that is true.

Here in Australia,
 We count ourselves lucky
 Is it luck, good management
 Or are we all just so plucky?

The rules may seem draconian
 They have irked us all no end
 We wish we can behave normally
 With family, co-workers and each friend.

Here's to all who wear a mask
 Here's to our valiant medical staff
 Here's to our governments who try
 Here's to us staying well and alive.

Our thoughts go out widely now
 To many who are not so well aided
 Who are struggling to hold COVID at bay
 For them good fortune has faded.

Help where we can, donate or give food
 Even though you may disagree,
 About wearing a mask
 Do your best to help contain this disease
 That is all they, them ask.

Em Goldy



Dunolly Community Garden News

Lemons are prolific at the moment, and even though our tree is small, it is well protected from frosts and has a heavy crop this year.

Other citrus trees are doing well in the community and lemons have been left at the share table at the front of the laneway at 94 Maude St. This is a “help yourself” table where excess home grown fruit and vegies are available for people to help themselves or where produce can be shared when your gardens are producing, more than you can use.

Time for lemon drinks, lemon butter, lemon chicken and lemon meringue pie. In the garden there are strawberries runners being thinned and potted out this week, so there will be more strawberry plants next year. We are meeting at 3pm on Thursday afternoons and everyone is welcome.

Lisa Mahon

Foundation for Rural & Regional Renewal (FRRR)

(Check out the recipe for crustless lemon tart on page 5.)

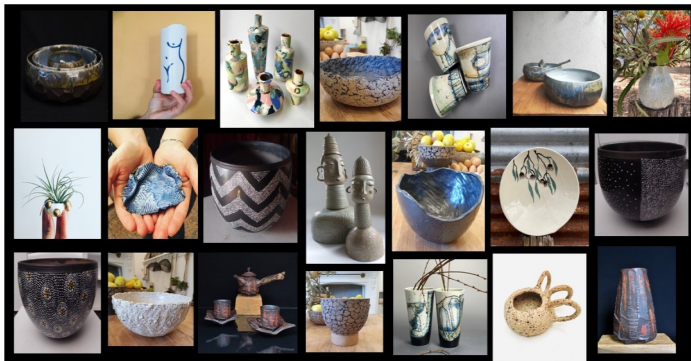
The Chimney saga at Junction House on Broadway, Dunolly

My Chimneysweep came yesterday and told me I have to remove the wooden mantelpiece. It nearly caught fire and the charred wood can be seen now that the cover has been removed. I have always thought I was careful and fire safe so this has been a real shock to realise how close I was to a house fire. I'll remove all timber and put a masonry fire safe surround. I'll also get advice from our local CFA to make sure it meets all requirements. I think I have narrowly dodged an horrific outcome.

Story and photos by Rachel Buckley



The badly burnt fire place at Junction House, Dunolly



We're very pleased to announce the St Arnaud Railway Station Gallery will be featuring a new Exhibition, entitled "eARTh" presenting the work of Central and Regional Victorian Ceramic Artists.

View from June 12th to August 23rd 2021 on Friday, Saturday, Sunday and Monday (11am to 4pm).

We would appreciate you forwarding this information to your friends, family, co-workers and contacts who may also like to visit or see our *Facebook* or *Instagram* posts.

We will be practising social distancing and hand sanitiser will be available. We supply a QR Code for you to scan as required to collect visitor contact details or can collect this information on paper if you prefer. We're also limited to 30 people inside at a time. We appreciate your cooperation.

We look forward to sharing this special exhibition with the Community.

Raillery Hub Incorporated, St Arnaud Railway Station
Queens Avenue, St Arnaud Vic.

(Located directly behind Riddleys Barastoc, 7-19
McMahon Street).

Paula Collard



Around school this week

The following restrictions in place at Dunolly Primary School. These will be updated after we receive updated advice.

No parents/carers can be onsite unless they have received prior approval from Katie

All students are to be dropped at the relevant gate according to surname

No parents or community members can be onsite to attend school assembly

Permitted adults onsite must wear a mask inside (unless teaching or working with children)

We are hoping that these restrictions change after tomorrow and we will update you with further communications as they come to hand.

Looking forward to seeing all our students tomorrow, thank you so much for your continued support and efforts during these very different times.



MORNING MUNCH

Come to school Monday and Wednesday mornings from 8.15am for a free breakfast !! Enjoy some toast or cereal with your friends. Keep a check on the Facebook page for other special items offered including baked beans on toast, porridge and milo.

NOTE: any students at school early on these days are expected to be in the MPR as the yard isn't supervised at this time.

DUNOLLY FRIENDLY GROCER



**LICENSED SUPERMARKET
93 BROADWAY, DUNOLLY**

TRADING HOURS:

Mon-Sat: 8am to 6pm

Sunday: 8am to 5pm

Great weekly specials
fresh fruit and vegetables – liquor
fresh meat – deli – dairy - daily papers
plus excellent service

Tel: 5468 1241

**This week's value in focus is:
Integrity**

Being honest and true to myself

Continued from Page 1

After a time they left, only to be called back shortly after. This time Nerissa heard somebody thumping around on her roof about 3am. There was a blackout then which lasted about 30 minutes, and the spotlights were outside my window again. As soon as the power came back on all of Nerissa's touch lamps came on too, so she had to get up and turn them all off. The same happened to my remote controlled ceiling fans.

No wonder we were all very tired the next morning. However at breakfast time on Friday I was very happy to have my power back on. In the light of day it was clear how serious this could have been if it had happened in the middle of summer. Burnt patches were visible in the grass under the tree and black blobs of some melted substance were sitting on the concrete gutter.

As I was lying awake in my very bright bedroom on Friday morning I got to thinking about the CFA volunteers who get up out of their cosy beds or chairs and head out into the cold dark night to assist their community. Captain Ken Duell, when asked, said that all the volunteers were motivated to help their community and also the wider

community, and while it was not easy to open your eyes when the alarm came through, once you were out of bed it was much easier to get moving. Recently the Dunolly CFA has had several new members which they are very happy about. Though of course more would be good.

The fire on the electricity pole was the first of two call-outs that night. The second came about 5.30 am and was to a roadside burn off which had flared up again. Ken said it was good to see people cleaning up around their properties in the cooler months. But this was a timely reminder to people to make sure the fire is completely out before they leave it. That saves the CFA volunteers having to get up at 5.30am. Ken also said this is the time of year to check out your chimney for excess creosote build up. The Dunolly Fire Brigade usually gets several call-outs a year to chimney fires.

Small towns like Dunolly run on volunteers, and while they all do important jobs the CFA and SES are really vital to our well-being in an emergency, and to voluntarily take on such a role is awesome.

Vicky Frizzell



Scammers capitalise on pandemic as Australians lose record \$851 million to scams

Australians lost more than \$851 million to scams in 2020, a record amount, as scammers took advantage of the pandemic to con unsuspecting people, according to the ACCC's latest Targeting Scams report released today.

The report compiles data from Scamwatch, ReportCyber, other government agencies and 10 banks and financial intermediaries, and is based on more than 444,000 reports.

Investment scams accounted for the biggest losses, with \$328 million, and made up more than a third of total losses. Romance scams were the next biggest category, costing Australians \$131 million, while payment redirection scams resulted in \$128 million of losses.

"Last year, scam victims reported the biggest losses we have seen, but worse, we expect the real losses will be even higher, as many people don't report these scams," ACCC Deputy Chair Delia Rickard said.

"Unfortunately scammers continue to become more sophisticated and last year used the COVID-19 pandemic to scam and take advantage of people from all walks of life during this crisis."

Of the \$851 million in combined losses, \$176 million were reported to Scamwatch alone.

"Victoria, which was significantly impacted by the second wave of the virus, recorded the highest losses nationwide for the first time and Victorians reported \$49 million in losses to Scamwatch, more than double those in 2019," Ms Rickard said.

"We saw scammers claiming the government restrictions meant people could not see items in person before purchase. This was a common ruse in vehicle sale and puppy scams, which both had higher reports and losses." As people spent more time online during the COVID-19 pandemic lockdown, reports and losses for some scams also increased.

Health and medical scams increased more than 20-fold compared to 2019, accounting for more than \$3.9 million in losses. Losses to threat based scams increased by 178 per cent to \$11.8 million.

There were also more than \$8.4 million in losses to remote access scams, an increase of more than 74 per cent.

Phishing activity also thrived during the pandemic, especially through government impersonation scams. There were more than 44,000 reports of phishing scams, representing a 75 per cent increase.

For more information click here:

<https://www.scamwatch.gov.au/news-alerts/scammers-capitalise-on-pandemic-as-australians-lose-record-851-million-to-scams>

Media release from scamwatch.gov.au



A happy pot creates a happy plant, making a happy owner beam and smile.

Plant happy plants in joyful pots, it will be worth while.

Photo by Faria Anzum
<https://unsplash.com>



Opening Hours:

Monday 9.15am - late
Tuesday 9.15am - 2.30pm
Wednesday Closed
Thursday 9.15am - 2.30pm
Friday 9.15am - 2.30pm
Saturday and Sunday Closed

Give Bek and Casey a call today
0448 780 638



Regional Victoria lockdown ended, restrictions in place

From 11.59pm last Thursday (3rd June), the lockdown in regional Victoria came to an end, meaning there are now no restrictions on the reasons to leave home.

Private gatherings in the home are not permitted, however outdoor gatherings are allowed in a group of up to 10 people.

Face masks must be carried at all times and must be worn indoors (except in your own home or if a lawful exception applies). Face masks are required outdoors where physical distancing of 1.5 metres can't be maintained.

Schools have resumed face-to-face learning, while workplaces such as offices can increase to 50 per cent or 20 people (however, if you can work from home you should continue to do so).

The Loddon Shire Wedderburn office is now open to the public, as is the Loddon Visitor Information Centre. Please note the information centre has temporary new hours – 9am to 5pm Monday through to Saturday and is closed on Sunday and public holidays.

Shops, restaurants and cafes, and beauty and personal care services (where a customer can wear a face mask throughout the service) are all open, with density limits and restrictions on number of people per venue.

Outdoor sport and recreational facilities have reopened with density limits and a maximum of 50 people per venue. Junior community sport has returned, for participants 18 years old or under, and only outdoors. Spectators are only permitted for the purposes of supervising children or dependents.

Outdoor group classes are limited to 10 people.

For full details regarding current restrictions in regional Victoria, please visit www.coronavirus.vic.gov.au/how-we-live-information-regional-victoria

Business Costs Assistance Program and Licensed Hospitality Venue Fund

The Victorian Government has launched the Business Costs Assistance Program Round Two and the Licensed Hospitality Venue Fund 2021.

The Business Costs Assistance Program assists small to medium businesses, including employing and non-employing businesses, most impacted by the recent restrictions in Victoria.

The program provides \$2500 grants for eligible businesses.

Applications for the Business Costs Assistance Program are open until 11:59pm Thursday 24th June 2021.

For more information and to apply, visit :

www.business.vic.gov.au/bcap

The Licensed Hospitality Venue Fund 2021 is now accepting grant applications from eligible businesses to help with costs incurred under restrictions. Eligible businesses can receive a grant of \$3500 for premises in regional Victoria.

Email invitations will be sent to the eLicence email linked to licensees' Liquor Portal account.

To receive an application form link, licensees must have an eLicence email on their Liquor Portal account.

For more information visit:

www.business.vic.gov.au/lhvf2021

Council welcomes funding announcements

Council has welcomed recent funding announcements from the Victorian Government for the Pyramid Hill Community Centre Development and the Donaldson Park Community Hub.

The Pyramid Hill Community Centre Development will receive \$2,475,000 to deliver Stage 1 of the project, which will include construction of the allied health wing, standalone senior citizens room, new toilet facilities and renovation of the existing hall and kitchen.

The funding will also enable the expansion of storage for kitchen and user groups, development of breakout space and associated landscaping, and installation of car parking, kerb and channel and associated drainage infrastructure.

The funding was through the Victorian Government's Regional Infrastructure Fund – Stimulus Round.

The Donaldson Park Community Hub will receive an additional \$1,381,974 towards the \$5.2 million project.

The funding, through the Victorian Government's Community Sports Infrastructure Stimulus Program, supplements committed funding of \$2.5 million from the Federal Government's Community Development Grants, \$350,000 from Wedderburn Clubs and Committees and the community, \$100,000 from Inglewood and Districts Community Enterprise funding, with remaining funding from Council.

The Donaldson Park Community Hub project will upgrade facilities at Wedderburn's Donaldson Park. This includes construction of a new multi-sport and community-focused pavilion with four gender-neutral change rooms, carparking, new multi-faceted playspace for all abilities, landscaping and internal paths, and large solar installation with batteries.

On behalf of Council, I'd like to thank the Victorian Government for the recent funding announcements for these significant projects.

Get Active Kids Voucher Program

The second round of the Get Active Kids Voucher Program is now open.

The Get Active Kids Voucher Program helps eligible families get their kids involved in organised sport and recreation activities by reimbursing the cost of membership, registration fees, uniforms and equipment. Eligible children may be able to receive up to \$200 each.

To apply for a voucher, your child must be aged between four and 18 years old, a Victorian resident, and be named on either an Australian Government Healthcare Card or Pensioner Concession Card and Medicare card.

To apply visit <https://www.getactive.vic.gov.au/vouchers/>

Loddon Mayoral Column

8th June 2021



GOLDFIELDS MINI DIGGER

Servicing Maryborough (Vic) and Surrounds

Post holes

Trenches

Driveways

Backyards

Contact: Darren Cooper

Mbl: 0456 651 418

Web site: www.goldfieldsmindigger.com.au

Supplied courtesy : The Puzzle Wizard



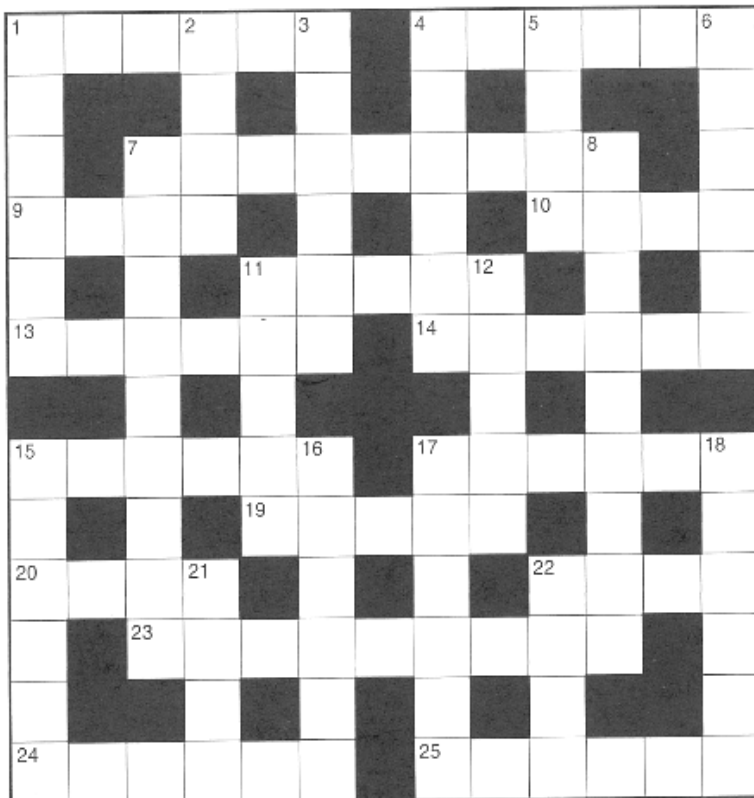
- 23. Formation of milk (in body)
- 24. Name shared by a breed of sheep and the fine wool obtained from same
- 25. Unit of measurement of angle
- 16. Poor, densely crowded area of city
- 17. N.Z. supermodel, Rachel ____
- 18. Petty officer in RAN
- 21. Full-length (of garment)
- 22. Academy Award-winning film, *On Golden ____*

Across

- 1. First person singular pronoun
- 4. Metal alloy used in tableware, eg.
- 7. Distribute (magazine, eg.) over a wide area
- 9. Owl's cry
- 10. Not fast
- 11. Quick sharp sound
- 13. Deaden (a sound)
- 14. Effortlessly
- 15. Broadcasting
- 17. Desirous of food
- 19. Malicious demon
- 20. Rich soil
- 22. Game played on horseback

Down


- 1. Complete disorder
- 2. Document authorising one to leave a country, ____ visa
- 3. Capricious
- 4. Sovereign's residence
- 5. Mental abilities
- 6. Landing strip at airport, eg.
- 7. The granting of an honour, eg.
- 8. Great jazz composer, Duke ____
- 11. Resonant metallic noise
- 12. Capital of Afghanistan
- 15. Flowering



Solution for No. 67

P	R	O	N	O	U	N	C	E	M	E	N	T
A	L	N	O	V	V	R						
R	E	G	U	L	A	R	I	R	A	Q	I	
A	A	Y	M	L	C	C						
L	I	S	T	F	A	R	M	U	S	E		
L	B	E	L	O	W	E	N					
E	L	I	C	I	T	B	I	S	E	C	T	
L	N	D	I	G	I	T	E					
O	P	E	N	D	U	N	S	C	A	N		
G	X	H	S	P	H	N						
R	E	A	D	Y	M	A	R	T	I	N	I	
A	C	D	A	O	N	A						
M	O	T	H	E	R	O	F	P	E	A	R	L

**Acrylic, Oil, water colour,
or pencil that is the question**



200 works to choose from
Alvah Art Gallery
 16 Dunolly-Bridgewater Road DUNOLLY
 Mb 0439029989
 Email emu28@bigpond.com

Gallery : Open 10am to 5pm most days 12noon to 4pm Sunday
 Local Car Tours available (including self drive)

CLASSIFIEDS & NOTICES

CONGRATS!

ON YOUR 80TH BIRTHDAY

An Octogenarian

Chapple David

Another OBE — Welcome to the crew.
Have a wonderful 80th David and enjoy our 81st orbit around our Sun in good health and with happiness and prosperity always.
Take care and keep smiling.
Love and best wishes from Carolyn.

Wanted

Copper tubs out of an old boiler to be used for artwork projects.
Contact John on 0439 029 989 or email me on emu28@bigpond.com

Subs reminder

Subscriptions are due by the end of June 2021
Fill in the form on page eight and send it in.

Monika

The Welcome Record Treasurer



Today is the second day of Winter and as the cool weather hits it's time to stay warm around the fireplace. Sadly, each year we see an increase in the number of chimney fires from both fireplaces and wood heaters. Keep your home safe this winter by checking your chimney:

- ✓ Use a torch to check for creosote build-up or obstructions like bird nests.
 - ✓ Have your chimney professionally cleaned annually.
- If you have any queries, please feel free to reach out.

Helen Taylor

Community Safety Admin Support Officer

T: 03 5430 2200 E: Helen.Taylor@cfa.vic.gov.au



MARYBOROUGH VETERINARY PRACTICE

Caring for all animals large and small

49 Alma Street
Maryborough 3465



DUNOLLY AREA TUESDAY AFTERNOON

We conduct a mobile veterinary service throughout the Maryborough area

We are available for -

- House calls for small animal consultations, vaccinations etc.
- Routine farm consultations
- Routine horse and farm visits including pregnancy testing and horse dentistry

All appointments for call-outs must be made before midday on a Tuesday

Office hours - 5461 4466
After hours service available

It's not a job, it's my passion!
Making it happen for everyone as you are my Priority!



Kerri Jongeblod

Sales Consultant & Leasing Agent

96 Broadway, Dunolly Vic 3472

T: 03 5400 1298

M: 0407 026 268

E: kerri@p1property.com.au

you
We are Priority1



Central Goldfields Art Gallery re-development

Central Goldfields Art Gallery has received \$1.7 million from the Victorian Government and \$273,000 from Central Goldfield Council's 2020/21 Budget to complete significant redevelopment works.

Features of the redevelopment will include:

- New welcoming front entrance (whilst maintaining the historic façade).
- New reception area.
- Indigenous interpretative garden.
- Extended and modernised main exhibition gallery.
- Upgraded lighting system.
- New environmental controls to enable the loans of art works from larger galleries.
- New permanent collection gallery and smaller exhibition spaces.
- Upgraded and expanded central access ramp.
- Replacement of existing hanging ceilings with exposed rafters.
- New skylights to introduce light and views to the historic fire tower.
- Disability Discrimination Act (DDA) compliant access.
- DDA and public toilets.
- Small kitchen to support gallery openings and programs.
- New collection store.
- Improved administration space for gallery staff and volunteers.
- New loading dock for bus parking and exhibition deliveries.

Melbourne-based architects Nervegna-Reed are undertaking the concept design plans. Redevelopment works will commence in October 2021 with the launch of the redeveloped Gallery in winter 2022. During the redevelopment the Central Goldfields Art Gallery will be closed; however, a variety of Gallery programs and services will continue to be offered throughout the Shire. Central Goldfields Shire Cr Grace La Vella said. "It was exciting to see the redevelopment of one of the Shire's most significant tourism assets move to the next stage.

"Identified as one of Council's Priority Projects and a transformational project in the Central Goldfields Shire Tourism and Events Strategy 2020–2025, the redevelopment of our Gallery will create opportunities to present a great variety of art to the local community and wider region."

"The project will see Central Goldfields Art Gallery upgraded to meet the requirements of a contemporary public art gallery and ensure the Gallery meets national standards in the presentation of artworks for both touring exhibitions and local content.

"The permanent collection will be properly stored and displayed and visitor facilities will be extended and improved to ensure all ages and abilities are welcomed to the Gallery. A new entrance will be introduced, designed in a way that local people and visitors are encouraged to come on in and enjoy their public art gallery!"

CGSC Art Gallery News



DUNOLLY BOWLS

Sunday 30th May, the proposed BBQ, Trophy Presentation and AGM was canceled due to the Covid lockdown This was discussed at the committee meeting Monday evening, and all bowlers will be notified via email, text messages, phone call, also on *Facebook* when another date has been finalised. (See below for new times).

Wednesday 9th June Winter Jackpot Pairs at the time of typing this information Sunday 6th June, I was not certain about the game proceeding on Wednesday, due to uncertainty with Covid and the weather forecast. Should the game go ahead I will as usual mention the winners of the day in next week's *The Welcome Record*. Raeleen will also post on *Facebook* the information. Have you logged on to the Dunolly Bowling Club Facebook page? Wednesday 16th June Avoca will host the Winter Jackpot Pairs.

Winter Jackpot pairs on the 9th of June was cancelled due to Covid restrictions, hopefully see you all at Avoca on 16th June. The BBQ, Trophy Presentation and AGM is now being held Sunday 20th June, at 12noon. Can you please let Hannah know if you are able to attend the BBQ for catering numbers; a list has been put up in the clubroom Thank you.

Hannah Delconte



DUNOLLY GOLF CLUB

Last Saturday's competition had to be postponed due to COVID restrictions. However, the course was open for practice over the weekend, and more than 20 players took advantage of the excellent conditions to work on their game, which was good to see.

This Saturday, COVID permitting, we will hold the Fred Robertson Trophy event. This is another important traditional event for the club, being a stroke competition over 18 holes.

Please come along if you can make it, and help make it a great day. The course is in very good order thanks to the hard work of the greens committee, so come along and support the club as it continues to grow in strength.

Ian Arnold

All Day ^{or} BROADWAY

Café

* Custom Cakes

* Ready to Heat Meals * Catering

Open Monday to Friday 8am to 3pm

and every Market Day 8am to 1pm

Other times by arrangement

98 Broadway, Dunolly

Ph: 5468 1734

In The Vegie Patch



The month of June is not as big a sowing month, as the soil is starting to get cold. However, there are always some plants or seeds that can be put in the garden beds. Sugar snap or snow peas can go in the soil at any time now, as they like the cool weather but frosts will burn the flowers so some protection may be needed.

Parsnip seeds can be sown from now until the end of October. Seeds sown now will be slow germinating unless a raised clear plastic cover can be put over them, but must be removed when the seeds emerge, or else the stem will grow tall and weak.

Plants of early maturing onions can be transplanted out now, like flat white, early globe and odourless, these varieties are less likely to run prematurely to seed. Spring onion plants (not seeds) planted now can be very useful in the springtime when most of the long keeping browns are finished.

Now is a good time to plant out strawberry runners; they like a cold start and grow during the winter months. Plant them 30cm apart in pots with good quality potting mix or in raised beds enriched with compost and manure. Mulch with straw to prevent fungal disease and keep strawberries clean.

Plant some late plants of broccoli or sugarloaf cabbage, if space is available in the garden. All winter greens need to be fertilised now, to make strong healthy plants. Blood and bone is great, it contains good amounts of nitrogen, phosphorus and calcium. Sprinkle a small handful under each plant every couple of months until harvest.

Fruit trees

Winter pruning of fruit trees is used to train a tree to a particular shape, or to encourage substantial growth, so is recommended for newly planted trees until the tree has achieved the desired height and shape.

Grapevines can be pruned from now on, but some vines are cut back differently to others, so when pruning vines, it is best to make sure that they are cut back correctly. Varieties can be cut back to two buds, while the sultana can be left with eight or 10 buds. Fruit is borne on canes one year old, water shoots will grow on older wood, these are not fruit bearing canes and must be cut out. To avoid mildew and blue mould it is best to spray after pruning with a copper based spray, or Bordeaux mixture, and at least twice during the winter or early spring. Do not spray Bordeaux once the new leaves start to show, or else the young foliage will burn off.



Pest tip

Black spot and powdery mildew remedy

500ml of milk

2 tablespoons of bicarb soda

5 litres of water

Mix together and spray liberally over foliage and stems.

This can be applied at any time of the year.



Winter garden tips

- Protect frost sensitive plants by applying a seaweed solution periodically throughout winter to both the soil and foliage. For individual plants, cover with an old sheet or frost cloth at night to protect them from any frosts which may occur. If using frost cloth, it can be left in place, otherwise be sure to uncover them during the day so they can enjoy the warmth of the sun.
- Prune the last of your summer flowering perennials and make a list of plants you would like to plant next spring.
- Prepare the soil for bare-rooted roses and trees prior to purchasing them. Then soak in a seaweed solution prior to planting. Stake at planting time if necessary.
- Rake up leaves and add them to your compost
- Plant pansies or violas in pots and planters for a splash of winter colour.

Happy gardening

From The Maryborough and District Garden Club